

20W LED Flood Light

New Design with Epistar LEDs

Features & Benefits

EpistarLEDs

IP65

ULPending

PowerFactor: 0.95

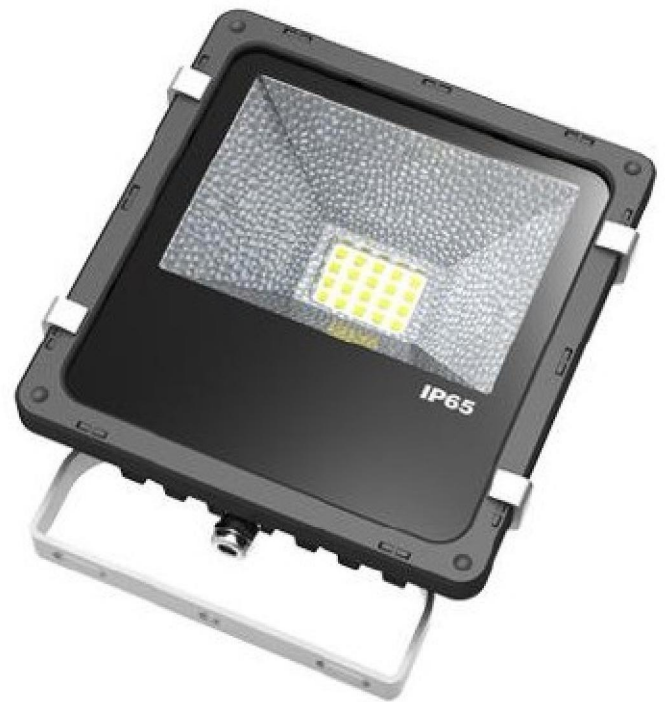
85-265VAC

TemperedGlass

110degree beam angle

10-200wdifferent choices

NO noise, NO flicker, NO UV and IR.



Ordering Information

Part Number	Description
GL-FL1-20WA	LED Flood Light, Epistar LED. 20watts Warm white, 2800-3200K 85-265VAC.
GL-FL1-20WA	LED Flood Light, Epistar LED. 20watts Nature white, 3800-4200K 85-265VAC.
GL-FL1-20WA	LED Flood Light, Epistar LED. 20watts Pure white, 5500-6000K 85-265VAC.

Specifications

Dimension	201 x 166 mm
Beam Angle	110 Degree
Light Source	Epistar LEDs
Input Voltage	85-265VAC
Working Frequency	50/60Hz
Ambient Temperature	-20°C - 50°C
Power Consumption	20Watts
Lumens	1900-2000lms
Power Factor	0.95
Colour Temperature	Warm white(2800-3200K) Nature White(3800-4200K) Pure White(5500-6000K)
CRI	>83
Lifetime	30000 hours

Notes:

GL	FL	1	20	WW	Voltage	A
Grace LED	Flood Lamp	LED No.	Power Consumption	WW Warm White NW Nature White PW Pure White	85-265VAC	Item

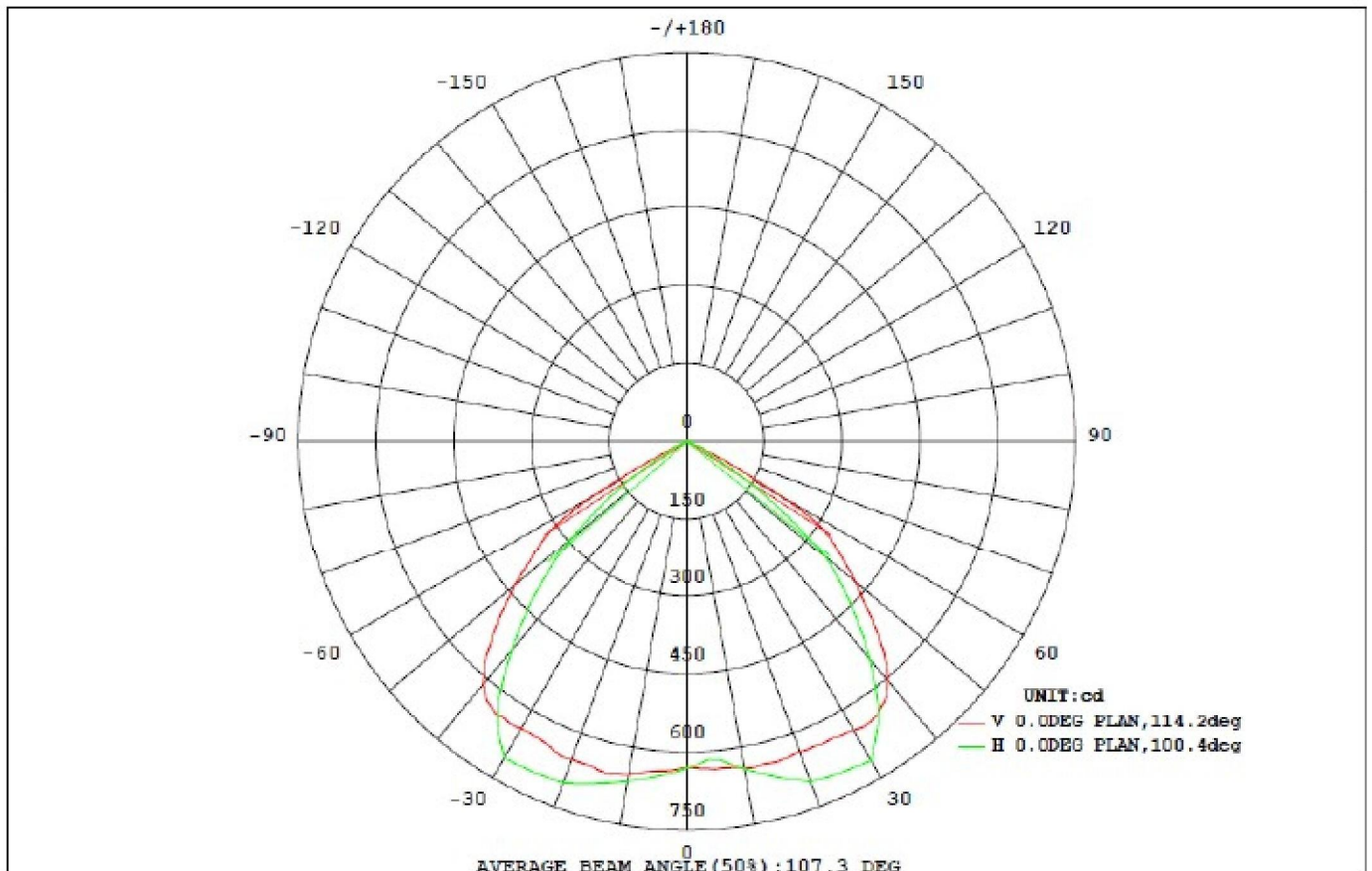
Applications:

1. Square & Billboard
2. Parking Lot & Garden
3. Building
4. Factory & Warehouse
5. Stadium
6. Gas Station, etc.

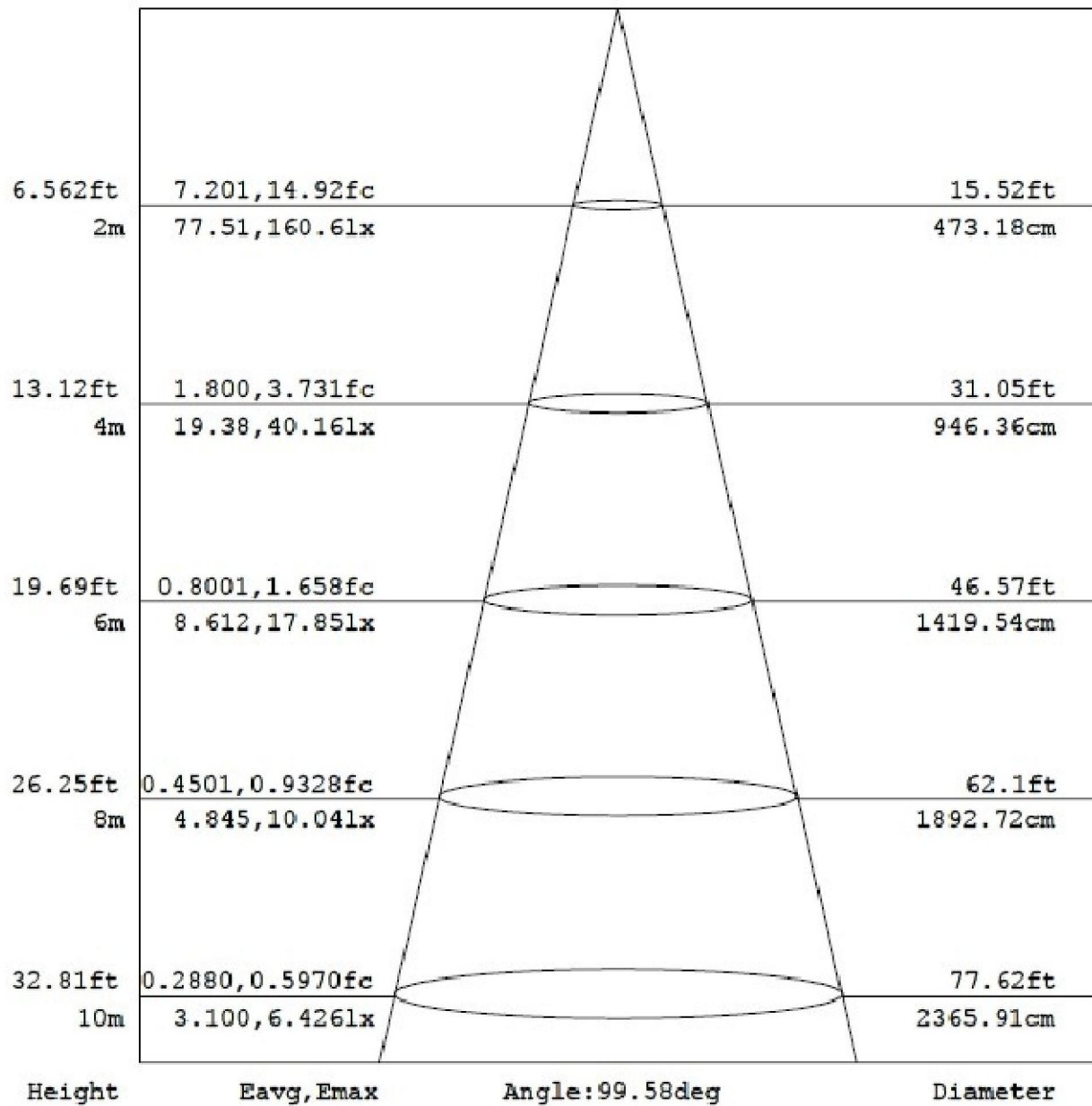
DATA Sheet

Testing Data:

DATA OF LAMP		Eff: 80.11lm/W	
MODEL	KSF02020	I _{max} (cd)	716.5
NOMINAL POWER (W)	22	AVAILABILITY (%)	98.6
RATED VOLTAGE (V)	220	Avai. FLUX (lm)	1706
NOMINAL FLUX (lm)	1730.45	LOR (%)	100.0
LAMPS INSIDE	1	TOTAL FLUX (lm)	1730
TEST VOLTAGE (V)	220.8	θ @50% (H, V)	103, 100 DEG



DATA Sheet



Advantages:

